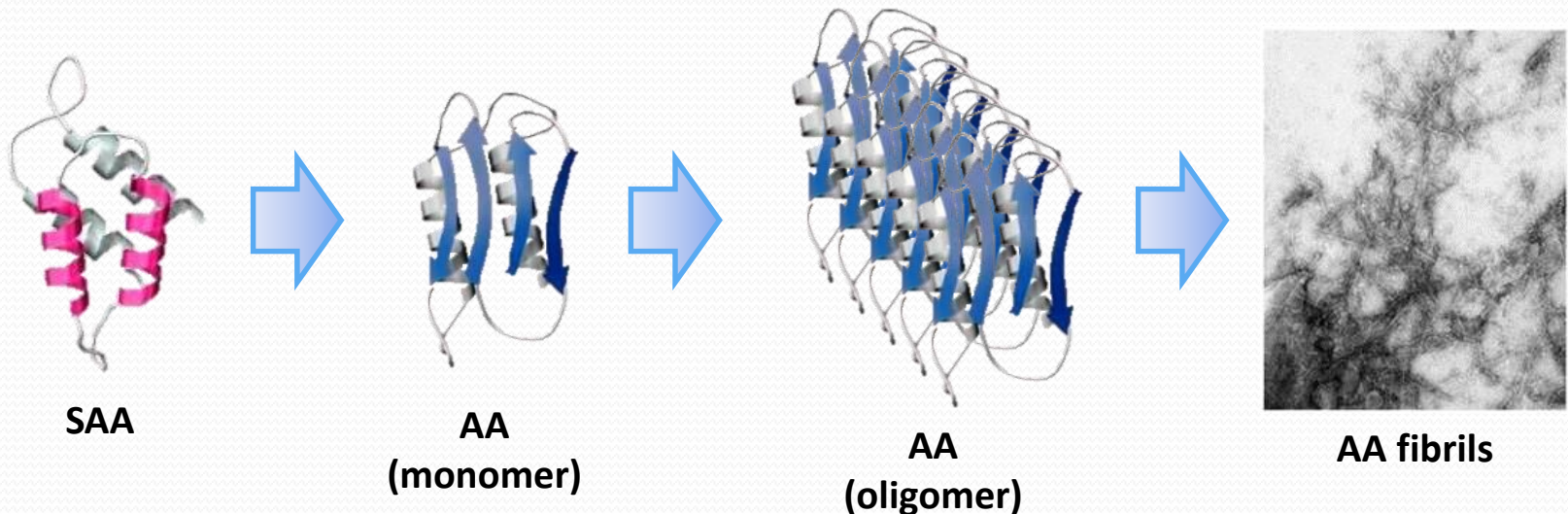


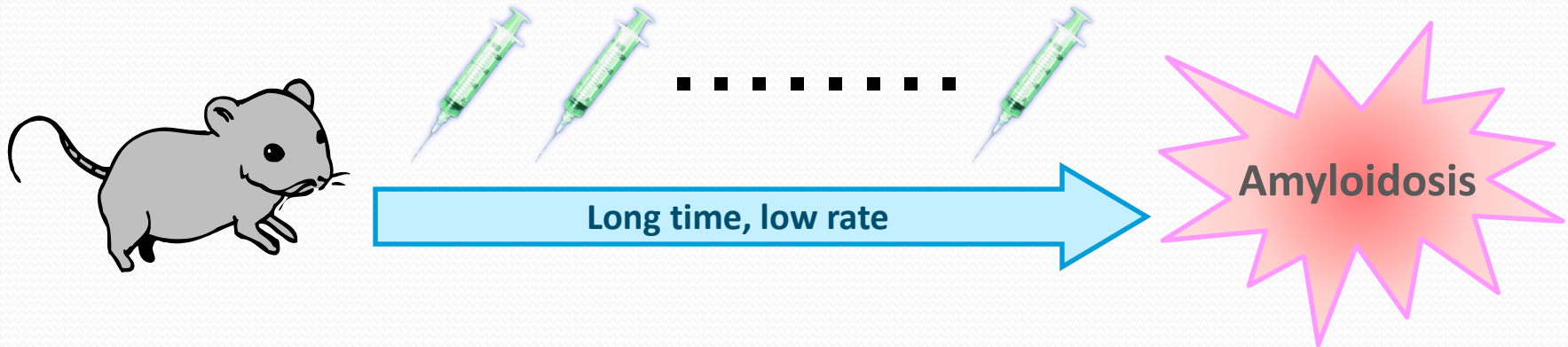
AA (Amyloid A) amyloidosis

- Fatal disease characterized by systemic AA deposits
 - Secondary to chronic inflammatory disorders
 - Precursor protein is SAA (Serum Amyloid A)
 - **A continual high concentrations** of SAA can lead to aggregation of AA fibrils

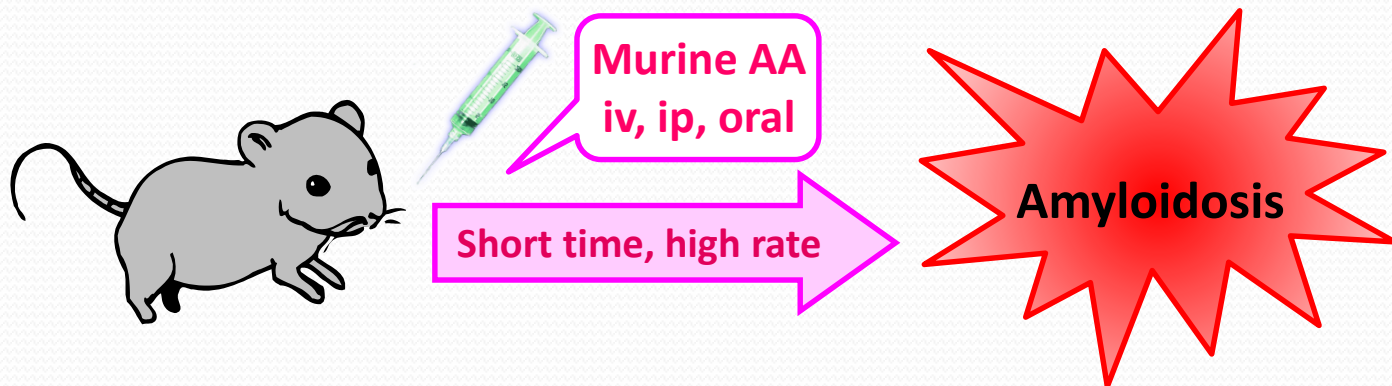


Experimental AA amyloidosis

□ Induction of AA amyloidosis



□ Transmission of AA amyloidosis



Public health problem

- ❑ Cross-species transmission (Murakami et al., 2014)
 - Food animal AA amyloidosis transmit to mice and rabbits
- ❑ Amyloid deposits in skeletal muscle of cattle and chickens (Murakami et al., 2012, 2013)
- ❑ Amyloid deposits in slaughter cattle (Tojo et al., 2005)
 - Amyloid might be creeping into beef.

Food animal AA amyloidosis transmit to human?